

New features 27/11/2007

Comparison of patients with control individuals.

Once patient data has been loaded, it is possible to compare it to data from control/unaffected individuals. To do this click the **Controls** menu highlighted in figure 1 by the turquoise ellipse. This opens a second window that contains a panel equivalent to the lower panel in the main window. Control data is added to the form via the **File** menu in the same manner as data is added to the main form. By default changes applied to the patient data are automatically applied to the control data; however this behaviour can be suspended as shown below. Closing the control data window will discard all data loaded in to it.

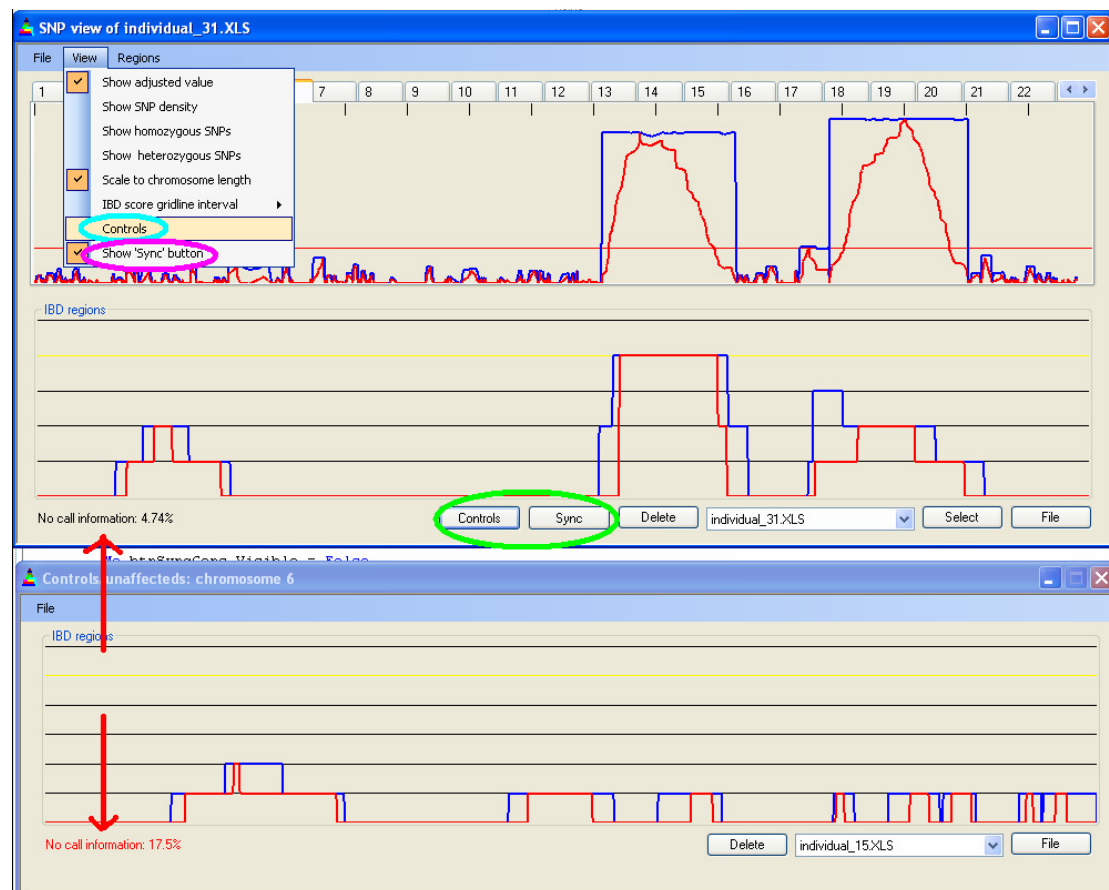


Figure 1. Data in IBDFinder can now be compared to control data to identify common regions of homozygosity found in unaffected individuals.

Manually synchronising patient and control data interfaces.

When working with large data sets it may become inconvenient to refresh the programme each time the view is edited by either the **View** or **Regions** submenus. If the **Show 'Sync' button** menu is checked (violet ellipse in figure 1) the 'Sync' button will appear on the main window (green ellipse in figure 1). If the control data form is present a second 'Controls' button will also appear. Changes made via the **View** menu will not be implemented unless the 'Sync' button is pressed. However, changes made via the **Regions** menu or by changing the selected chromosome will be applied to the main form but not the control data form. To update the control data the user must press the 'Controls' button.

Identifying low quality genotype data.

The error rate of homozygous SNPs miscalled as heterozygous SNPs seems to be linked to the number of NoCalls present in a file. Therefore the number of NoCall genotypes is shown in the bottom left corner of each form (red arrows in figure 1). This data relates to the data file shown in the list box in the lower right hand corner of the form. If the number exceeds 5% it is shown in red. While it is possible to use data with a high NoCall rate it must be used with care.